

FOR SALE



WHITAKER PARK

DEVELOPMENT LOTS

LOT # 3

WINSTON-SALEM, NC 27105

SALES PRICE: \$75,000/ACRE



PROPERTY FEATURES

- ±8.85 Acres
- Rail Access is Possible
- Located in Opportunity Zone
- Build to Suit
- New Access Road to Site
- Easy access to Hwy 8/52 corridors
- General Industrial District Zoning
- Adding 605-12 Building (6.76 AC. + 8.85 AC.) = 15.61 Acres



BOB LEWIS, CCIM SIOR
BROKER
blewis@naipt.com
336.214.1799



CHRIS LOWE, CCIM
BROKER
clowe@naipt.com
336.207.3245



JAMIE NEWELL
BROKER, SITE SELECTION &
INCENTIVES NEGOTIATION
jnewell@naipt.com
919.306.3003



HAL JOHNSON
NAI EARLE FURMAN
hjohnson@naief.com
864.907.6000

PROJECT:

WHITAKER PARK EAST
WINSTON-SALEM, NC

CLIENT:
WPDA, Inc.
1000 West Forth Street
Winston-Salem, NC 27101
Phone: (336) 723-8955

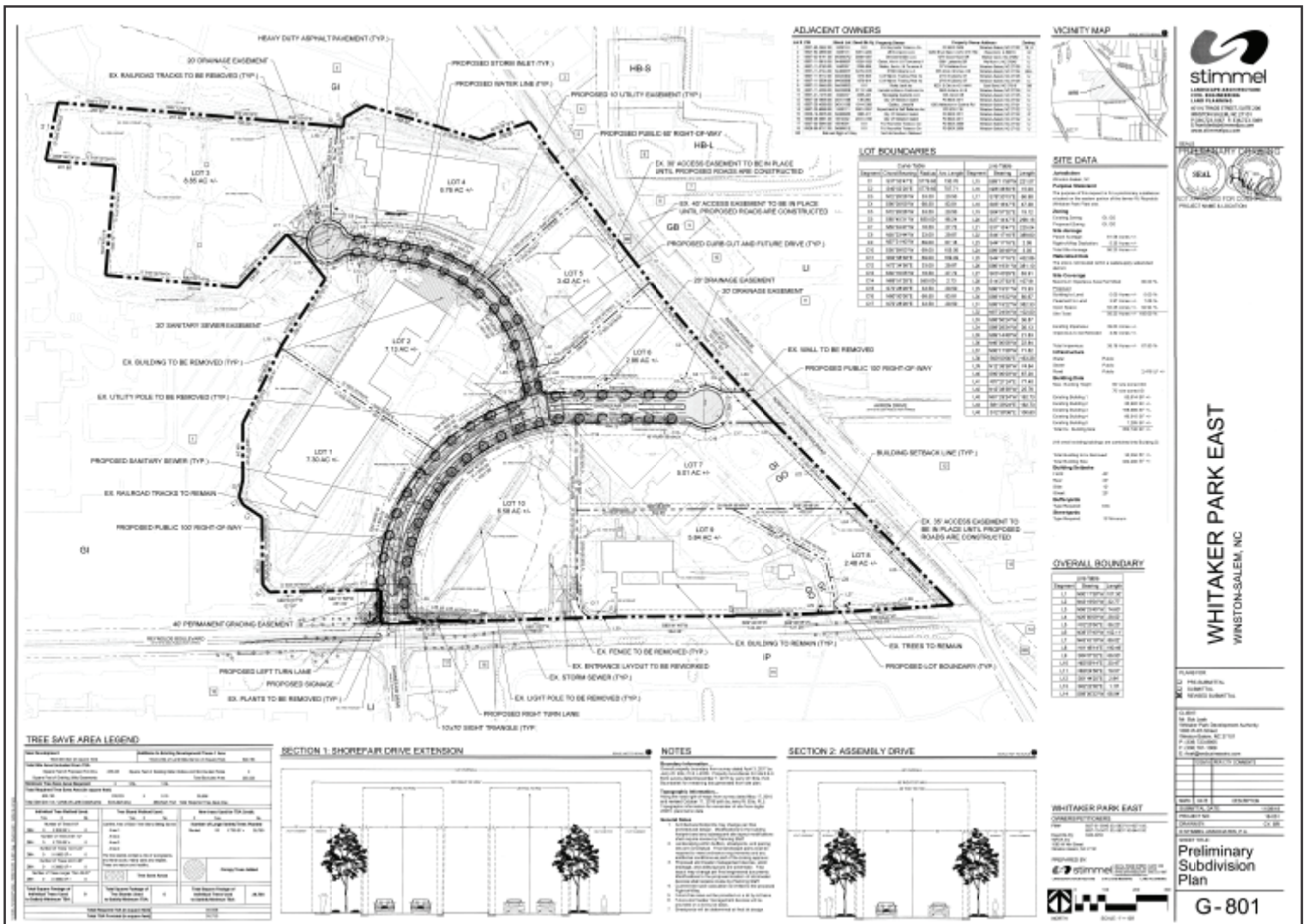
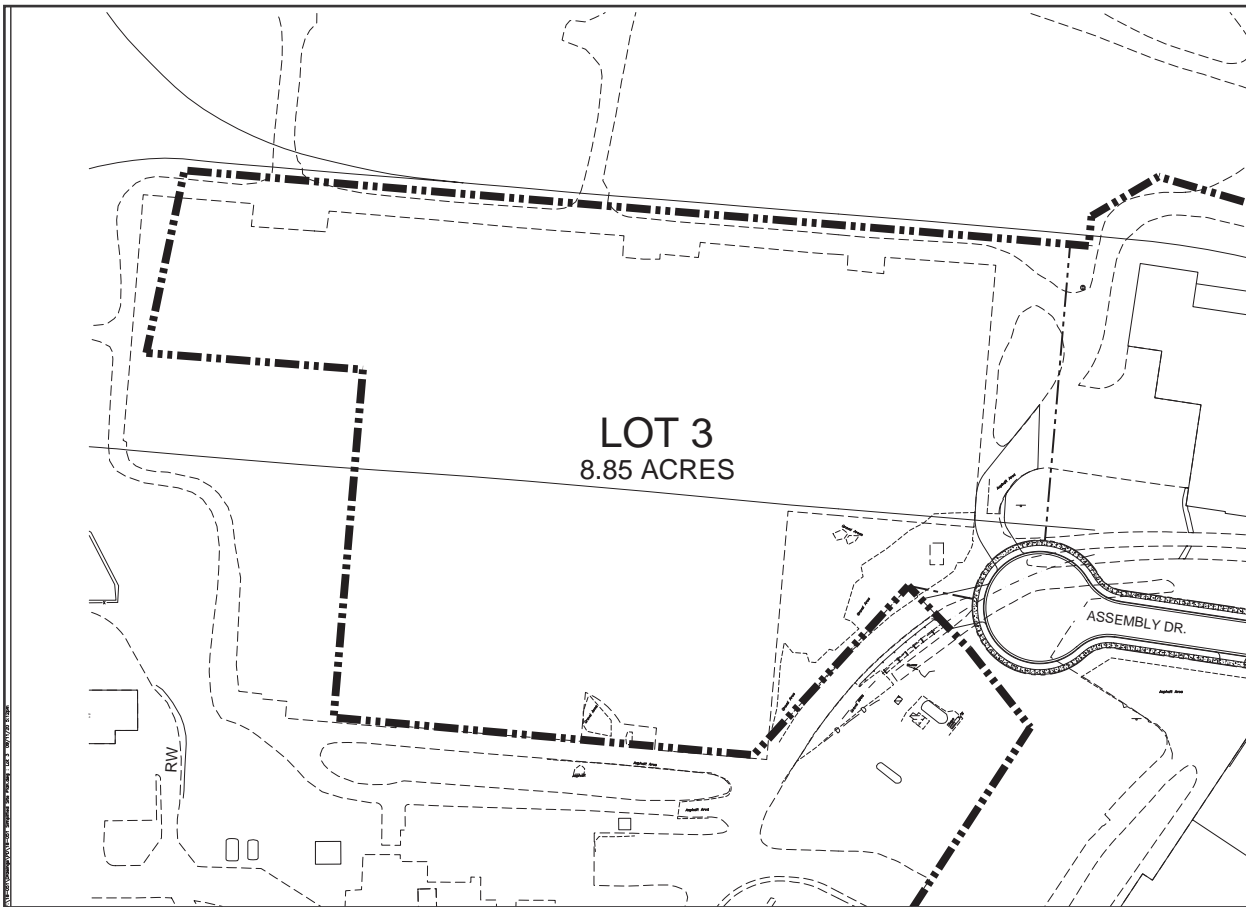
DATE: 11/02/18
REVISIONS:

JOB NO. 18-051
SHEET TITLE:

LOT 3

SCALE:
SHEET NO.:

© STIMMEL ASSOCIATES, P.A.



WHITAKER PARK EAST
WINSTON-SALEM, NC

PLANNED BY: Stimmel Associates, P.A.
DATE: 11/02/18
SHEET NO. G-801

Preliminary Subdivision Plan

G-801

MAPS

